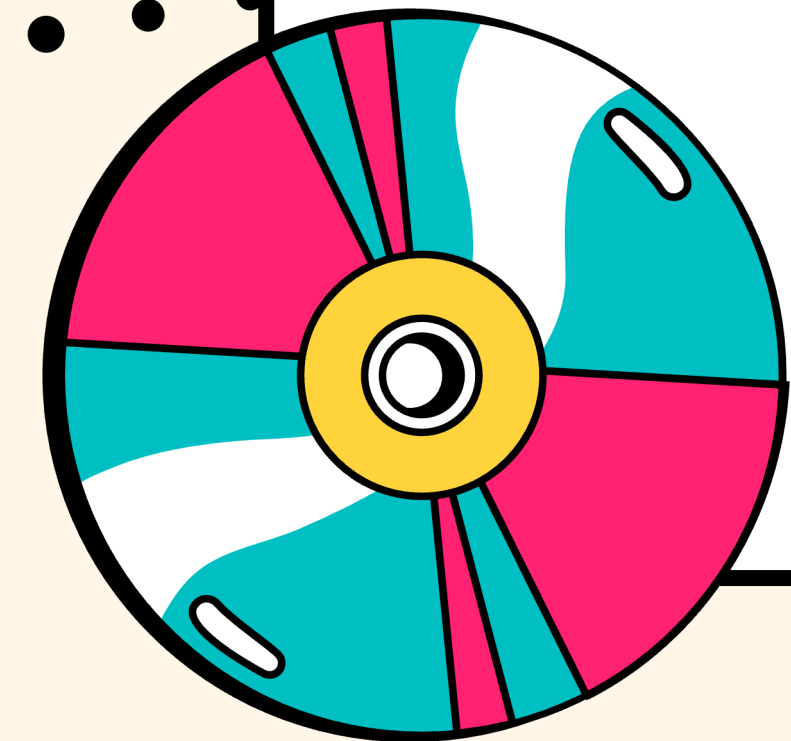
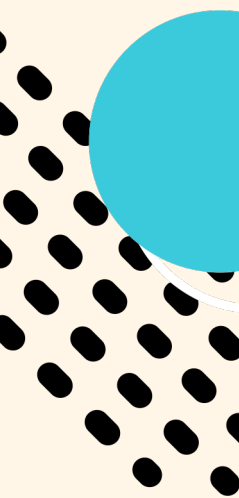
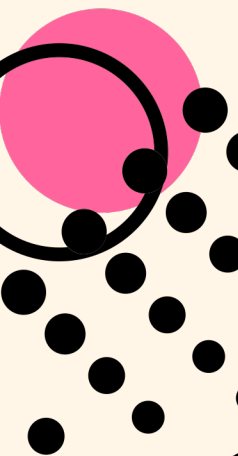
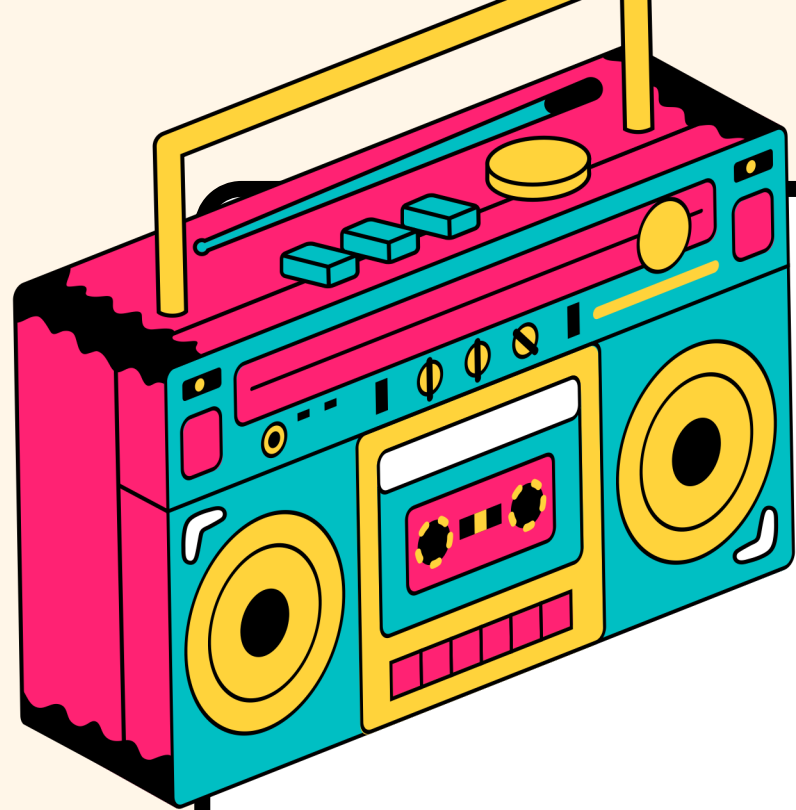


Curriculum Night

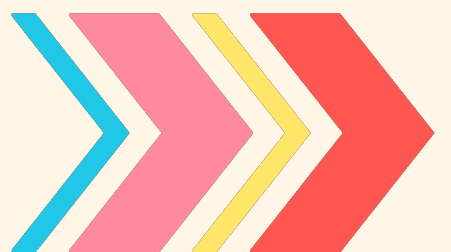
3rd grade



TONIGHT'S GOAL:



THE GOAL OF
TONIGHT'S MEETING IS
TO INFORM YOU OF THE
CURRICULUM TOPICS
YOUR CHILD WILL
LEARN IN 3RD GRADE.



Class Schedule



7:05–7:30	Arrival
7:30–9:30	ELA (Reading, Grammar, Vocab)
9:30–10:00	W.I.N. Time
10:00–10:30	Word Study/Handwriting
10:30–11:15	Specials
11:15–11:30	Recess
11:30–11:55	Lunch
11:55–12:35	Science/Social Studies
12:35–1:45	Math/Pack Up
1:45–2:15	P.E.
2:15–2:20	Dismissal



Language Arts Block

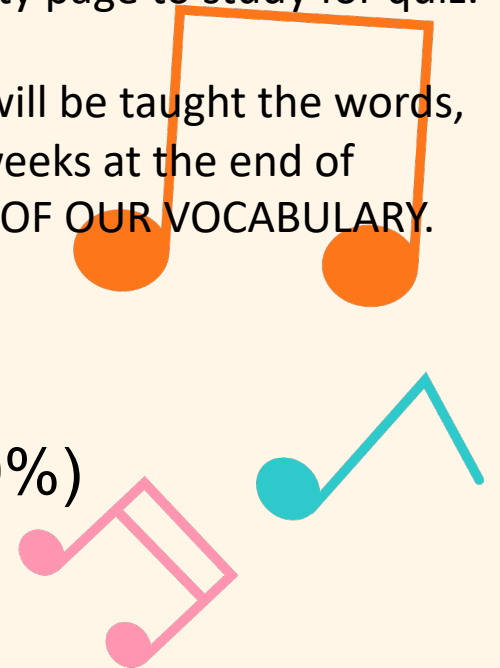
- Reading Comprehension Skills and Strategies
- Grammar
- Writing
- Phonics/Word Study
- Vocabulary

Benchmark Reading Workshop – Each unit is 3 weeks long where we practice skills and strategies for reading as well as vocabulary. A reading test with one story and questions is given each week, however on the 3rd week, the reading test will have 2 stories and questions for each story.

Phonics/Word Study – skill each week to practice reading and spelling words with that skill. Fluency Folder each week will match what we are learning. Phonics Quiz will be every 3 weeks. Students can use Build Automaticity page to study for quiz.

Vocabulary – Designed by a 3rd grade teacher to align with Benchmark reading passages. Students will be taught the words, definitions, synonyms, and antonyms of each week's vocabulary. A vocabulary test will be every 3 weeks at the end of reading unit. Words are discussed in depth many times during instruction to make them truly PART OF OUR VOCABULARY. Students will have built in study time and review games to practice before taking the test.

Grading: Language Arts: Assessments/Tests (60%) Class Work/Quizzes (40%)





Math Block

Saavas EnVision 2020 grade 3

Skills practice in computation (numbers) and comprehension (word problems).
Additional Practice pages will be sent home weekly that match the instruction in class.
I will occasionally ask students to complete work online through the EnVision website.

Topic lengths vary as does the comprehension of students. Test will be announced and practice pages for the topic will be sent home before the test. We will also have review problems and games in class.

- Math: Assessments/tests (60%) Class Work/quizzes (40%)



SCIENCE/SOCIAL STUDIES

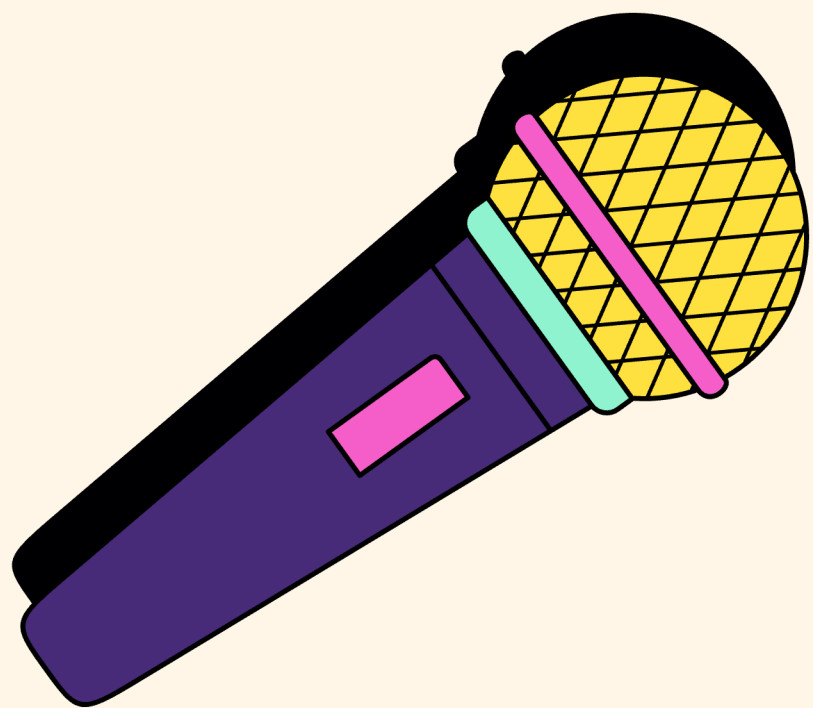
Science and Social Studies will be taught in alternating rounds. I allot 4 weeks for Science Units and 4 weeks of Social Studies Units.

No official textbook for each of these.

We have resources for science such as STEMscopes and mystery science.

For social studies, we have found and developed resources that align with our state standards.

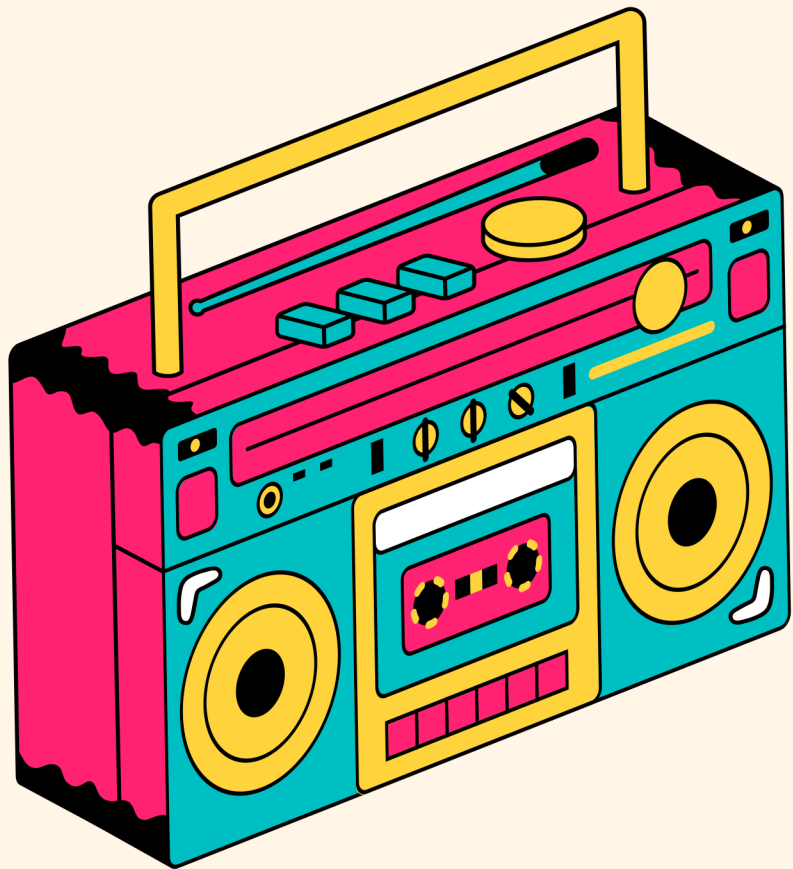
We are currently investigating new science curriculum to adopt a new curriculum this school year.



HOMework

Posted on the newsletter each week.

- Help your child practice becoming a fluent reader.
- Help with practice reading the words correctly.
- Reinforce math concepts being taught in class.





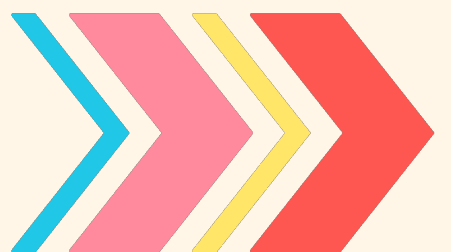
PROGRESS REPORTS

Progress Report Card Dates:

1st 9 Weeks: September 11

2nd 9 Weeks: November 13

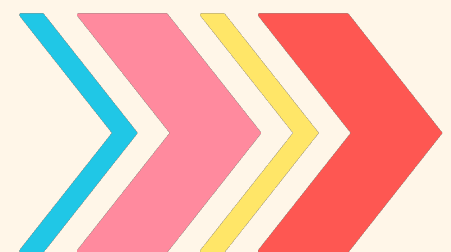
Progress Reports will go home every 4 to 5 weeks to keep you up to date with your child's progress. The first progress report (9/11) will cover more work and study habits demonstrated the first few weeks of school than grades.



ARRIVAL

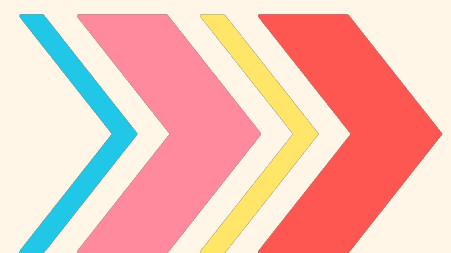
School begins promptly at 7:30 am.

- Students can pick up breakfast in the MPR and bring to the classroom
 - Breakfast costs \$1.50 and Lunch costs \$2.50.
 - Breakfast is over at 7:30 am when the tardy bell rings.
- Students arriving late must have a tardy pass from the front office. I will stick the tardy slip in your child's planner, and it will need to be signed by a parent or guardian.



DISMISSAL

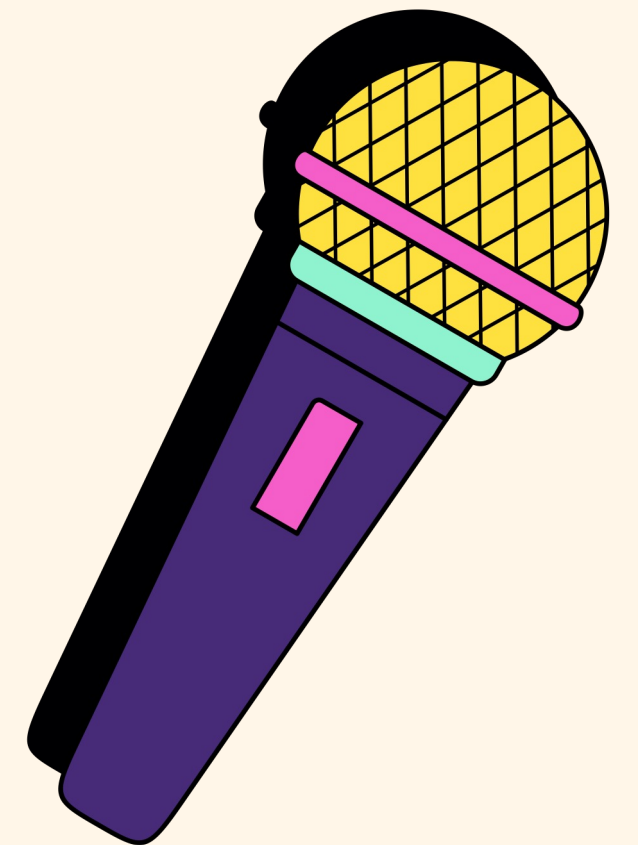
- School dismisses at 2:20 pm each afternoon.
- If there are any changes to your child's typical way home, you must complete a change of transportation form which can be found on the school's website in the Parent Quick Links section.
- Without an official form, your child will be sent home the same way you notified me at the beginning of the school year.





Pick Pride

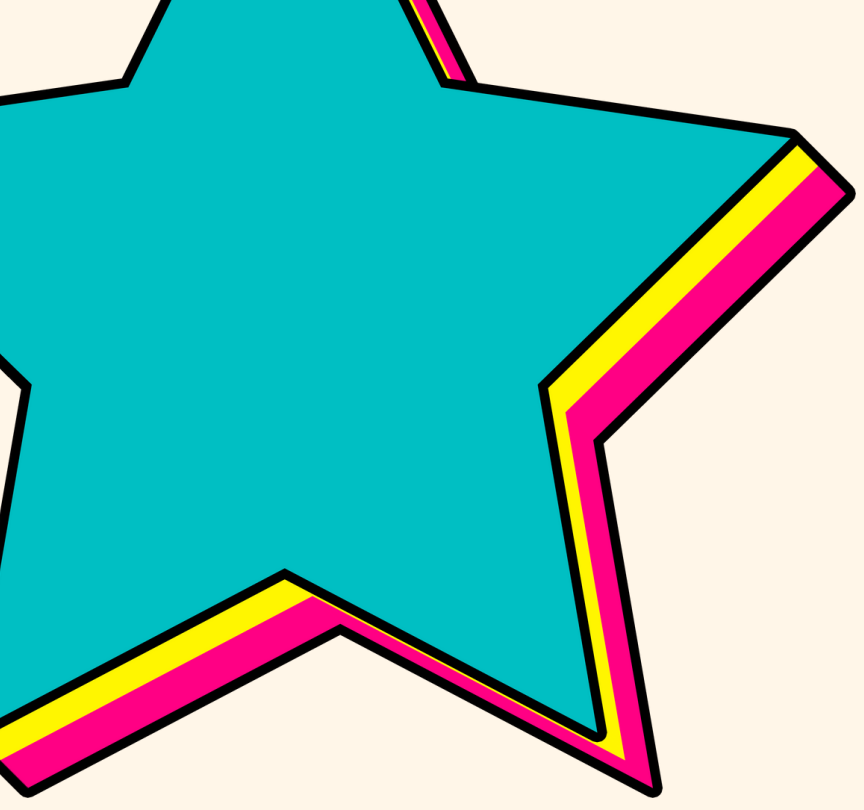
P ositive words and actions
R esponsibility for Self
I ntegrity and Honor
D isplay Self-control
E xcellence in Everything



Reminder-

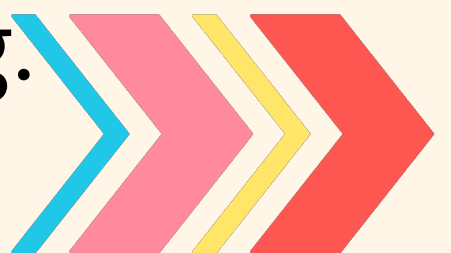
Please see me after this if you have not signed up for Class DoJo app! It is my main form of communication.





FRIENDLY REMINDERS

- Please send ONLY water to drink. No colored drinks are permitted at Pick.
- Please send 1 snack for your child each day. We eat snack around 9:00.
- The tardy bell rings at 7:30am. Please leave your home in plenty of time so your child has time to walk into the building and get to class if your child is a car rider. We begin lessons right away each morning.



COUNSELORS CORNER

PES Counseling Program

- Amy Brown is a nationally certified counselor and is proud to be your child's school counselor. Contact her at abrown@auburnschools.org 887-2113 or check out her website at <https://www.auburnschools.org/Domain/1401>

Counseling Services include the following:

- ✓ Bimonthly counseling lessons on the 7 habits, bullying, personal safety, academic success, college and career awareness, and grade transition
- ✓ Individual and small group support when there is a social/emotional issue creating a barrier to learning (grief, divorce, anxiety, impulsivity, etc)
- ✓ Responsive services and crisis management
- ✓ Referrals to community agencies and therapists as needed
- ✓ Collaboration and consultation with staff & parents to ensure success





Bus Riders

Children living two miles or more from the school are invited to use our school bus transportation as a means of traveling to and from school. A complete schedule of all school bus routes and stops is available in the school office. Students closer than a two mile radius of Pick do not qualify to use our bus transportation. Students eligible to ride the bus should ride only their assigned bus. Teachers will supervise the loading and unloading of buses. Buses will load for afternoon dismissal at the 2:20 bell. Parents are responsible for bringing and picking up any student who misses the bus.

Students must abide by the following rules when riding the bus:

- Obey and cooperate with the bus driver. The driver and/or PES staff may assign seats for students.
- Be seated immediately after boarding. Remain seated and face forward.
- Do not talk to the driver except in emergencies.
- Do not scuffle or harass other students.
- Do not yell, fight, quarrel or use profanity.
- Keep feet, arms, and belongings out of the aisle. Do not put feet on the bus seat.
- Keep hands, head, and objects inside the bus.
- Help keep the buses clean by picking up any trash that is dropped.
- Do not bring food, gum, or drinks on the bus.
- Do not bring weapons, fireworks, or anything that endangers the lives of others on the bus. Also, there will be no smoking, or striking matches or cigarette lighters on the bus.

Bus Discipline

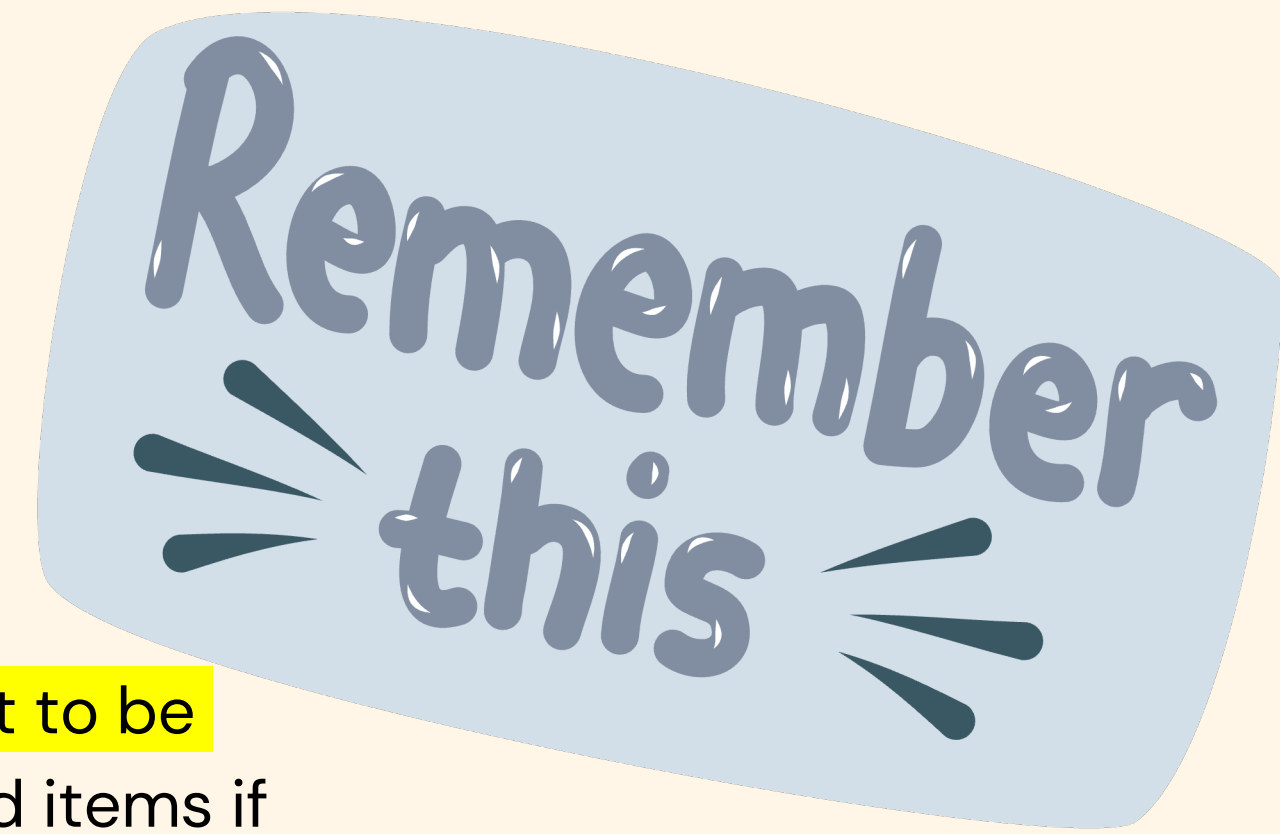
The bus driver is responsible for notifying the transportation director of violations of the bus conduct rules given earlier in the handbook by completing a Bus Discipline Referral. The transportation department will collaborate with PES administration to address the incident/concern. A letter will go home with students who are disciplined on the bus. Punishment for bus offenses is consistent throughout the Auburn City School System.

- The minimum consequences for bus offenders are as follows:
- **First Offense** – one-week suspension from riding the bus
- **Second Offense** – one-month suspension from riding the bus;
- **Third Offense** – suspension from riding the bus for the remainder of the year.
- A student can also be suspended from riding the bus without warnings for major offenses at the discretion of administration at any time.



REMINDER

BIRTHDAYS & CELEBRATIONS!



BIRTHDAYS: For the health and safety of all our PES students, food items are not to be sent to school for individual student birthdays at all. Parents may send non-food items if they wish, such as pencils, stickers, or a book for the classroom library. Our CNP program is going to recognize students on their birthday month with a special treat. Parents may come have lunch with their child on that special day if there are no visitor restrictions in place.

No flowers or balloons are to be received at school for students at any time for birthdays or other special events.

CELEBRATIONS: If the classroom teacher plans a special classroom celebration, there may be a request form or sign-up sheet for celebration items. For health and safety reasons, we ask that you please send in prepackaged, individually wrapped food items when these requests are made. Thank you!

LUNCH VISITORS



We welcome you to join your child for lunch!

We kindly ask that our lunch guests:

- are listed in the child's contact list
- do not bring in fast food items
- sit in the Special designated lunch areas for guests
- respect the class schedule and student's time to return to class
- Let the teacher know if you plan on purchasing a school lunch, so we can add you to our lunch order count.

Thank you!

TESTING AND ASSESSMENT

We use a variety of formative assessments during the school year to give us valuable information about student academic performance to improve instruction:

- STAR Reading and STAR Math
- Edmentum
- Benchmark Curriculum Assessments
- Envision
- ACCESS (EL Program)
- Specific diagnostics as needed

Our state summative assessment is the ACAP (Alabama Comprehensive Assessment Program)

- According to the Alabama Literacy Act (#2109-523), third grade students who demonstrate an acceptable level of reading proficiency on the ACAP or an ALSDE approved supplemental standardized assessment or reading portfolio may be promoted to 4th grade.

STAR Testing Windows	
Beginning of the Year	August 19-30
Middle of the Year	December 4-12
End of the Year	April 28 – May 2
ACAP Summative	
April 1- 17	



SCHOOL PICTURE DAY

Smile

Date: September 6

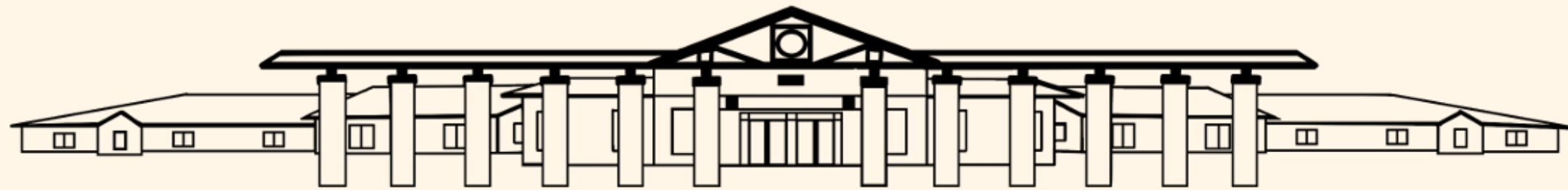
COMMUNICATION



- Weekly Newsletter in binder
- Email: kbcarlson@auburnschools.org
- Call front office 887-2110
- Class DoJo – Messaging App

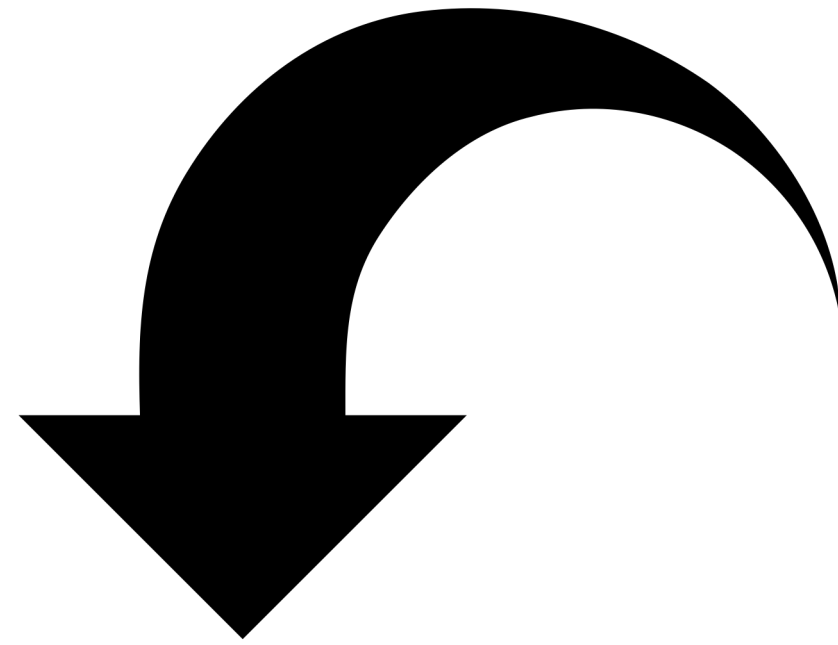


PTO BUDGET



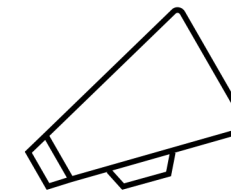
PICK ELEMENTARY SCHOOL
#thevillageonthehill

ALABAMA LITERACY ACT



Please scan the QR code
below to document that
you received the printed
information sheets
regarding the Alabama
Literacy Act.

Alabama Literacy Act for Families
Module-2024-2025



WE ARE REGION #9

